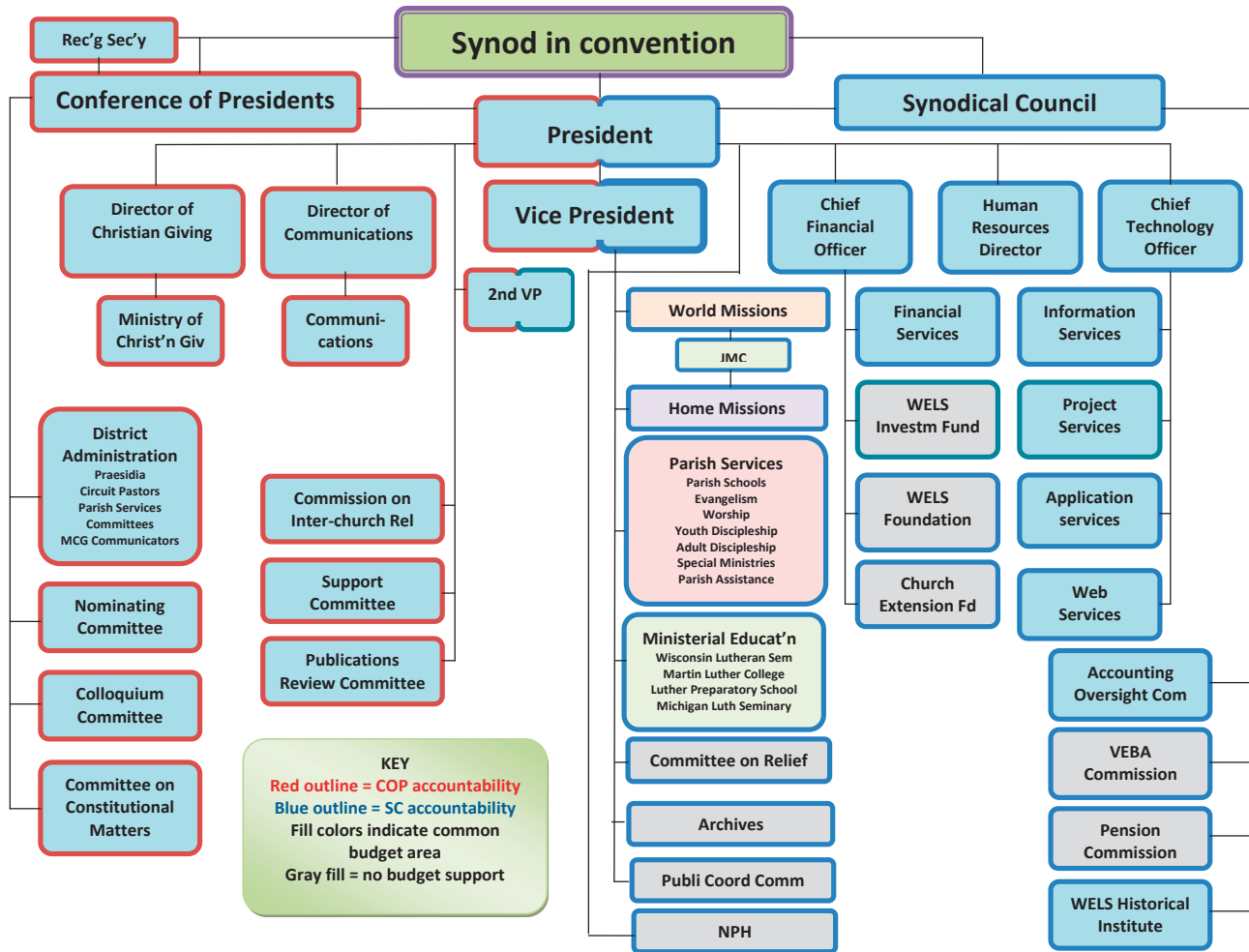


# Together we are WELS

2008  
Annual Report





**KEY**  
 Red outline = COP accountability  
 Blue outline = SC accountability  
 Fill colors indicate common budget area  
 Gray fill = no budget support

# President's message

---

The 2007 WELS convention made some bold decisions, grounded in our faith and trust in God's amazing grace and unbreakable promises. Together we resolved that we would work to expand our efforts in home and world missions and maintain our system of training pastors and teachers. In spite of daunting financial challenges, those decisions were made with the trust that God would bless our desire to seize the opportunities that he was placing before us.

As always, God did not let us down. Through an overwhelming response from God's people and through other factors that only God could bring about, we followed through on our commitment to expand mission efforts. Six new home missions were established in 2008, and 16 additional pastoral positions were granted for expanded mission outreach. We called two missionaries to enter Mozambique, the first new foreign mission field established in more than 10 years. Our ministerial education schools continue their work of preparing people for the public ministry.

Through this instrument called the Wisconsin Synod, God gives us the privilege of joining our hearts and our resources in carrying out the kinds of kingdom work that we can't easily do as individual Christians or congregations. As a synod, we also continue to walk together in the truth of God's unchanging Word, still committed to all of the teachings of Scripture and holding to the doctrines of the Lutheran church as outlined in the Lutheran Confessions.

This work that we do together as a synod is not about us. It's all about God and what he has done for us in Christ. As you read through this report, let each page be a description not of our accomplishments, but of God's grace and blessing. These reports are stories of God's power and love. For all of his blessings, we declare his praises and thank him for using us to proclaim the saving gospel of Jesus Christ in our communities, in our nation, and around the world.



Mark Schroeder  
WELS President

# Conference of Presidents funds the mission

---

One of the chief roles of the Conference of Presidents is to fund WELS' ministry plan, which is set by the synod in convention. The 12 district presidents are encouraging congregations to evaluate the offerings they give to the synod to carry out the work we do collectively. The goal is for all congregations to commit 10 percent of their total receipts.

The Conference of Presidents authorized a special Year of Jubilee offering in 2008 to eliminate the synod's debt of \$22.4 million. If God blesses the efforts, \$2.7 million in annual debt payments would be freed up to conduct other ministry.

The Conference of Presidents also plays a vital role in overseeing and maintaining the doctrinal unity we enjoy as a synod—a God-given blessing unique among American church bodies.

## *2008 Conference of Presidents*

*Synod President:* Rev. Mark Schroeder

*Synod First Vice President:* Vacant

*Synod Second Vice President:* Rev. James Huebner

*Synod Secretary:* Rev. Robert Pasbrig

*Arizona-California District President:* Rev. Jon Buchholz

*Dakota-Montana District President:* Rev. Peter Naumann

*Michigan District President:* Rev. John Seifert

*Minnesota District President:* Rev. Charles Degner

*Nebraska District President:* Rev. Joel Frank

*North Atlantic District President:* Rev. Joel Petermann

*Northern Wisconsin District President:* Rev. Douglas Engelbrecht

*Pacific Northwest District President:* Rev. Theodore Lambert

*South Atlantic District President:* Rev. John Guse

*South Central District President:* Rev. Vilas Glaeske

*Southeastern Wisconsin District President:* Rev. David Rutschow

*Western Wisconsin District President:* Rev. Herbert Prah

# Synodical Council manages the resources

---

The Synodical Council, the synod's governing board made up of both laymen and called workers, is charged with managing the activities of the synod in pursuit of the mission laid out by the synod convention.

Meeting three times a year, these God-fearing men exercise faithful stewardship in managing the offerings brought forward by God's people.

## 2008 Synodical Council

Rev. Mark Schroeder, President

Vacant, First Vice President

Rev. James Huebner, Second Vice President

Mr. Dale Anderson, South Atlantic District Rep.

Mr. Rodger Anderson, North Atlantic District Rep.

Mr. Kurt Austad, Nebraska District Rep.

Mr. Warren Ehlke, Pacific Northwest District Rep.

Rev. Douglas Engelbrecht, Conf. of Presidents Rep.

Dr. John Freese, Teacher-at-Large Rep.

Mr. Seth Hansen, Dakota-Montana District Rep.

Mr. Philip Hempel, Michigan District Rep.

Mr. Ron Hillmann, Northern Wisconsin District Rep.

Mr. Paul Holzhueter, Minnesota District Rep.

Rev. Philip Koelpin, World Missions Rep.

Rev. Joel Leyrer, Parish Services Rep.

Rev. Peter Naumann, Conference of Presidents Rep.

Rev. David Rutschow, Conference of Presidents Rep.

Mr. Tom Schlittenhart, Arizona-California District Rep.

Mr. Timothy Snyder, Southeastern Wisconsin District Rep.

Rev. Donald Sutton, Ministerial Education Rep.

Mr. John Tappe, Western Wisconsin District Rep.

Mr. Robert Timmerman, South Central District Rep.

Rev. Earle Treptow, Pastor-at-Large Rep.

Rev. Charles Westra, Home Missions Rep.

# Ministerial Education trains the workers

---

The Board for Ministerial Education oversees the equipping of a new generation of called workers to spread Christ's love. The three-tier system includes Luther Preparatory School, Watertown, Wis.; Michigan Lutheran Seminary, Saginaw, Mich.; Martin Luther College, New Ulm, Minn.; and Wisconsin Lutheran Seminary, Mequon, Wis.

Through offerings and special gifts, WELS members subsidize one-fourth to one-third of the cost of education for future called workers at these schools. As the costs of education rise, so do concerns about how to maintain and increase the number of students preparing for the public ministry. Although enrollments have decreased at all the ministerial education schools over the past five years, Rev. Don Sutton, chairman of the Board for Ministerial Education, believes that a revamped recruitment system at Martin Luther College and increased cooperation from area Lutheran high schools will result in improved recruitment for ministry.

## Michigan Lutheran Seminary / [www.mlsem.org](http://www.mlsem.org)

"In 2008, Michigan Lutheran Seminary was grateful for the blessings of financial stability; clear support from the synod; and high morale, based on the love of Christ," reflects President Paul Prange. He also notes that the school continues to send 50 percent of its graduates to Martin Luther College and is welcoming international students who are training for the ministry to serve either in the United States or in their countries of origin.

*Opening enrollments for Ministerial Education schools from 1998–2008*

	<b>1998</b>	<b>1999</b>	<b>2000</b>	<b>2001</b>	<b>2002</b>	<b>2003</b>	<b>2004</b>	<b>2005</b>	<b>2006</b>	<b>2007</b>	<b>2008</b>
<b>Wisconsin Lutheran Seminary</b>	147	154	149	165	182	185	191	180	176	175	165
<b>Martin Luther College</b>	876	910	1041	1072	1074	1021	948	818	731	720	723
<b>Luther Preparatory School</b>	528	560	576	561	524	482	435	390	382	339	332
<b>Michigan Lutheran Seminary</b>	338	367	379	355	345	315	286	275	242	234	197

## Ministerial Education trains the workers *(continued)*

---

### **Luther Preparatory School / [www.lps.wels.net](http://www.lps.wels.net)**

Luther Preparatory School's new president, Rev. Matthew Crass, is excited to report that the school continued its historic trend of enrolling 50 percent of its graduates at Martin Luther College in 2008. Luther Preparatory School alumni make up 25 percent of Martin Luther College's student body.

### **Martin Luther College / [www.mlc-wels.edu](http://www.mlc-wels.edu)**

The campus is buzzing with the sounds of construction, as ground was broken in 2008 for the school's chapel. The 1997 synod convention dedicated Forward in Christ offerings for this project, which President Mark Zarling says will help students grow in their faith through the daily use of gospel in chapel and worship.

### **Wisconsin Lutheran Seminary / [www.wls.wels.net](http://www.wls.wels.net)**

Paul Wendland, Wisconsin Lutheran Seminary president, reports the seminary is reviewing its curriculum. "God's truth never changes. That means some things in our curriculum we will never want to change," he says. "Yet there can be changes in the way we prepare pastors for the distinctive demands of the 21st century." All changes should be implemented by the 2010-11 school year.

### **A life-changing experience**

Katie Lange, a 2005 graduate of Martin Luther College, participated in the college's Daylight International program. She taught at Chiang Mai International School in Thailand from 2005-07.

"The main joy that I had," says Lange, "was teaching religion. I taught Bible stories to first- and second-graders who had never heard the message of salvation. One little Thai boy, Cen, was particularly excited about Bible stories. Within a few months of starting school, he told me that he loved Jesus and couldn't wait to go to heaven!"

Lange says that she uses her experiences in Thailand every day in her current classroom at Emmanuel, Tempe, Ariz.

# Home Missions reaches out domestically

---

## Did you know?

The Board for Home Missions accomplishes its mission through the district mission boards by partnering with congregations, groups, and individuals to encourage, enhance, establish, develop, and enrich mission opportunities to reach the lost with the gospel of Jesus Christ throughout North America.

The Board for Home Missions helped establish six new congregations in 2008 in the following locations—Battlement Mesa, Colo.; Crossville, Tenn.; New Lenox, Ill.; Sparks, Nev.; Northwest Las Vegas, Nev.; and Rochester, Minn. Home Missions also helped place 19 workers in new and expanding gospel outreach ministries.

Approximately 190 congregations are now being assisted by Home Missions' district mission boards. In addition, Home Missions oversees three full-time campus ministries, six part-time campus ministries, and approximately 390 other campus ministries serving more than 8,500 students.

The board's vision is to invest in 20 new mission starts and 75 new enhancements of outreach ministries during the 2009-11 biennium.

Rev. Harold Hagedorn, Home Missions administrator, reminds us, "It is urgent that we love our neighbors enough to remember that God reconciled them to himself in Christ. Reach out to fellow members and encourage each other to reach out. Pick a congregation and reach out to encourage them in Christ. He has called us to such love."

WELS home missionaries are reaching out with Christ's love in their communities. Here are two of their stories:

- Rev. Dustin Blumer, New Lenox, Ill.: "My passion for ministry comes from people I meet like Ann. I met Ann while canvassing. We talked about life and also about what the community needed. Then we talked about Jesus. I explained that he paid for all our

## Home Missions reaches out domestically (*continued*)

---

sins through his death on the cross and that cross is the bridge that puts us in a right relationship with him. I told her that this is all a free gift of grace, and that if we add any of our works to grace it is no longer grace. I recited Ephesians 2:8,9. She got tears in her eyes and said, ‘I never heard it like that before.’ She confessed that is what she believes.”

- Rev. Ben Kuerth, Victory of the Lamb, Franklin, Wis.: “Last year marked two momentous beginnings for me and my family. The first was the birth of our daughter, Sophia. The second was the birth of our new church a week later.”

Kuerth details how the birth of his church went well, but the birth of his daughter had some scary moments. Sophia’s body totally shut down with the exception of her heart and brain, both of which were just barely functioning. Sophia’s doctor said she could die in the next three days. If she were to live, she would likely experience severe brain damage.

“‘Lord, have mercy,’ was all I could think to pray,” says Kuerth.

Yet Sophia came home one week later with no apparent side effects. Her neurologist is stunned. After each brain scan, he marvels. Kuerth used one visit to ask the doctor if he believed in God and gave a simple witness of his faith.

“I tell a lot of people Sophia’s story now,” concludes Kuerth, “because it’s not as much a story about Sophia as it is about God. This story has provided me a way to talk to unchurched people about God’s greatest miracle—the victory that Jesus won for us.”

# World Missions reaches out abroad

---

“Our calling is to bring the message of Christ’s love to the world,” says Rev. Dan Koelpin, World Missions administrator. “Christ died for all. The same love of God given to us in Christ is meant for the entire world. While we are all part of the mission right where God has placed us, World Missions does jointly what we cannot do as individuals, namely the work of supporting 50 foreign missionaries and mission outreach efforts in 23 countries around the world.”

During the past calendar year, gospel proclamation resulted in 1,658 souls being brought into the national churches of the world mission fields assisted by WELS. The 23 mission churches in fellowship with WELS contain 78,976 baptized souls and 37,854 communicant members. Most of those souls are nurtured through the ministry of 125 national pastors and 199 national evangelists. The enrollment of 144 Bible institute students and 112 seminary students in the various world mission fields points to a future bright with promise.

WELS Multi-Language Publications provides Christian literature in more than 40 languages for outreach to diverse ethnic groups. Multi-Language Publications has made it possible for WELS to spread God’s Word in nations where we cannot send missionaries. Ministry to Nepal and Pakistan falls into this category. In the past

## What can you do?

- Invite a missionary to speak at your church.
- Visit [www.wels.net/jump/bwm](http://www.wels.net/jump/bwm) to read reports from the missionaries.
- Attend a Lutheran Women’s Missionary Society circuit rally or annual convention.
- Read *Mission Connection*, the WELS mission newsletter.
- Volunteer as a lay mission worker through WELS Kingdom Workers.
- Present prayers and offerings to God.

## World Missions reaches out abroad *(continued)*

---

three years more than 16,000 people in Pakistan and 3,000 people in Nepal have enrolled in WELS Scripture learning programs in these countries using guided self-study Bible Teaching Series books published by Multi-Language Publications.

In Nepal, WELS worker training workshops, held every six months since 2005, have expanded from an enrollment of more than 40 workers in 2006 to more than 100 in 2008. The September 2008 workshops included studying the catechism and how to teach it, and the doctrine of justification. Sixteen “Bible women” and Sunday school teachers also participated in a separate training session.

For the first time in 13 years, WELS World Missions is entering a new country, Mozambique, with a traditional two-man missionary team. In February 2007, the Board for World Missions approved manpower and funding for mission work to this African country that borders Malawi. The missionary families who will serve in Mozambique have been living in Portugal since March 2008, where they are learning Portuguese, the language they will need for their work.

Administrator Koelpin notes, “The mission possibilities in Africa and Asia and the blessings the Lord is giving to outreach efforts there have compelled the World Missions Board to expand aggressively in those regions of the world.”

# Parish Services strengthens, equips, and encourages

---

“Parish Services serves WELS congregations in ways that will help them in their ministries of nurture, outreach, worship, and service,” says Rev. Bruce Becker, administrator of the Board for Parish Services. In 2008, God blessed Parish Services with the following accomplishments.

**Adult Discipleship:** The Heart in Focus participant’s workbook is finished, which will help congregations offer a gospel-focused financial course. Adult Discipleship trained 20 individuals to partner with them as presenters of the Schools of Stewardship and the Personal Financial Seminars for called workers. The Women’s Ministry Committee added four activity teams to help provide women’s ministry resources to WELS churches.

**Parish Schools:** Thirteen schools were accredited by WELS School Accreditation, bringing the total number of accredited schools to 46. Nearly 70 percent of WELS elementary and high schools contributed financial support to the commission during the 2007-08 school year. The funds allowed the commission to restore district ministry, enhance mentoring services to new teachers and principals, and begin efforts to redesign teacher assessment and continuing education programs. Nine men graduated from the Administrator Candidate Training Program in June. Several have already accepted calls to positions of greater leadership in WELS schools.

**Special Ministries:** The new Special Needs Family Network allows those with developmentally disabled family members to support and mentor others who have been blessed with a special needs family member. Over the last 18 months, the Jail Ministry Training Team trained more than 120 people. WELS Military Services Committee conducted military contact pastor training conferences, which prepare WELS civilian chaplains to minister to U.S. troops both on and off military installations. The committee also provided workshops to help congregations better recognize the stresses that deployment places on military personnel and their families so that congregations can provide spiritual and material support to military family members in their congregations and communities.

## Parish Services strengthens, equips, and encourages *(continued)*

---

**Youth Discipleship:** The commission completed the “Creating Youth-full Churches” Bible study, an outgrowth of the “Why Young People Leave WELS” national research study. Online resources expanded to include 20 mini-courses for Sunday school staffs and four for parents at [www.wels.net/university](http://www.wels.net/university). Content was added to [www.livingbold.net](http://www.livingbold.net) and [www.parentscrosslink.net](http://www.parentscrosslink.net), including audio devotions, spiritual videos, and podcasts on timely topics.

**Evangelism:** The commission conducted nine Schools of Outreach attended by 34 congregations. District evangelism committees focused on creating a new seminar, “Connecting to Communities.” Fifty of these seminars are scheduled synodwide. The material emphasizes congregations building bridges into their communities to draw attention to the church’s ministry and gain a wider audience for the gospel. The Evangelism Tool Box was also completed. It includes three DVDs, each containing resources to assist congregational leaders with evangelism programming.

**Worship:** The summer worship conference, the largest Lutheran worship conference in the United States, set new attendance records with more than 1,000 participants. The new hymnal supplement was debuted at the conference and is being introduced, along with support resources, through 75 workshops across the country. Schools of Worship Enrichment continue to assist congregations.

**Parish Assistance:** Congregations continue to seek Parish Assistance’s consulting services so that they can take their ministry to a new level of service, to God’s glory. After filling the school consultant vacancy, Forward with Lutheran Schools’ consulting ministry is expanding again. With the recent filling of another consultant vacancy, waiting congregations are now being served.

Administrator Becker concludes by noting that the number of specific requests from congregations for leadership training and development continue to increase. Parish Services will work to meet these needs as resources allow so that each area can continue to strengthen, equip, and encourage God’s people.

*For more information, visit [www.wels.net/jump/bps](http://www.wels.net/jump/bps)*

# Other areas work in support of ministry

---

## **Ministry of Christian Giving / [www.wels.net/jump/mcg](http://www.wels.net/jump/mcg)**

The Ministry of Christian Giving encourages members to excel in the grace of giving and assists them in making planned gifts in ways that benefit their congregations, synod, and WELS agencies. Christian giving counselors are available to help members with both current and deferred gifts.

In 2008, the Ministry of Christian Giving launched the Year of Jubilee campaign authorized by the Conference of Presidents. The goal is to eliminate the synod's \$22.4 million debt and free up \$2.7 million annually for ministry—dollars that would have been spent to pay down principal and interest.

## **Communication Services / [www.wels.net/jump/csc](http://www.wels.net/jump/csc)**

Communication Services is dedicated to keeping called workers, congregations, and laypeople apprised of all the major developments across the synod using all available media including print, video, Internet, and e-mail.

September marked the one-year anniversary of the bi-weekly e-newsletter, "Together." Sent to more than 5,500 called workers and almost 2,000 lay subscribers, it came about as a result of the 2007 synod convention's call to improve communication between synod administration and all members. To subscribe, visit <http://together.wels.net/subscribe>.

Communication Services strives to improve the content of all of WELS' key communication platforms, including *Forward in Christ* magazine and the *WELS Connection* video series. Planned for 2009 is a complete redesign of [www.wels.net](http://www.wels.net), keeping in mind non-members, or those new to WELS. The goal is to provide, in a compelling way, a window to the world of who WELS is—and at the same time easy access to a wealth of spiritual resources.

## Other areas work in support of ministry *(continued)*

---

### **Technology / [www.wels.net/jump/technology](http://www.wels.net/jump/technology)**

WELS Technology, acting as a servant to WELS' overall mission and ministry, seeks to provide a technical infrastructure that supports the activities of synodical organizations; assist called workers in the effective use of technology; promote technology in the parish to augment outreach and assimilation; extend the reach of existing efforts through enhanced communications; and coordinate technology initiatives that can't be done at smaller organizational levels.

In 2008, through a generous donation, Technology purchased audio and video equipment for live Web streaming of WELS events. This year the Technology staff streamed the Michigan District convention, a Hispanic Reformation service, call day and graduation services at Wisconsin Lutheran Seminary and Martin Luther College, and two area Lutheran high school Choral Fest concerts.

The rollout of Connect, the new synod Intranet site, has allowed many areas of ministry to collect and work together online. This tool, which will be rolled out to called workers and church workers in 2009, provides virtual storage for file sharing and communications in a safe environment.

### **Additional services**

Other departments that support ministry include Financial Services, Human Resources, Facilities, and WELS Benefit Plans, which administers WELS Voluntary Employees' Beneficiary Association (VEBA) and WELS Pension Plan. Although these areas often work behind the scenes, they carry out important functions for WELS.

### **Did you know?**

The WELS Web site, [www.wels.net](http://www.wels.net), had more than 1,000,000 unique visitors in 2008.

# Subsidiaries complement WELS' services

---

## **WELS Church Extension Fund, Inc. / [www.welscef.org](http://www.welscef.org)**

WELS Church Extension Fund's primary purpose is to make loans and grants to mission congregations of WELS. Loans are made for constructing or purchasing ministry facilities or parsonages and for the acquisition of land. Mission loans are made possible by investments of WELS members, congregations, and affiliated organizations in Church Extension Fund statement savings and loan certificates. Mission grants are made possible primarily by gifts and bequests made to WELS Church Extension Fund.

During the past fiscal year, loans to 18 WELS congregations funded projects totaling \$15.5 million. In total, WELS Church Extension Fund has more than \$125 million in mission loans. WELS Church Extension Fund also disbursed more than \$1 million in grants to mission congregations—bringing the total to \$21.3 million in grants disbursed since 1993. Projections indicate a steady need for loan and grant funding for mission congregations in the future.

## **WELS Investment Funds, Inc.\* / [www.welsfunds.net](http://www.welsfunds.net)**

WELS Investment Funds provides cost-effective, professionally-managed investment portfolios exclusively for WELS and WELS-affiliated organizations. The WELS Funds are designed primarily for the investment needs of endowment funds, scholarship funds, and charitable trust funds. Currently WELS Investment Funds is managing more than \$100 million in assets.

\* Participating in a WELS Fund or the WELS Balanced Allocation is subject to investment risks, including possible loss of the principal amount invested. Withdrawals are payable by WELS Investment Funds, Inc., exclusively from the net assets of the WELS Fund in which you participate. Accounts are not protected or insured by the FDIC or SIPC and are not guaranteed by WELS, WELS Foundation, Inc., or any other person or entity. This is not an offer to sell or request to buy securities. The offering is made solely by the Offering Circular. At this time, the WELS Funds are NOT available to WELS affiliated organizations located in Connecticut, Maryland, Mississippi, Pennsylvania, Tennessee, Vermont, or Virginia. Investment returns are reduced by the operating expenses of the WELS Funds and the fees and expenses of the underlying mutual funds in which the WELS Funds invest.

## Subsidiaries complement WELS' services *(continued)*

---

### **WELS Foundation, Inc. / [www.welsfoundation.net](http://www.welsfoundation.net)**

WELS Foundation exists to assist God's people in support of gospel ministry through WELS. It serves WELS donors and the ministries they support by providing the infrastructure to manage gifts such as charitable remainder trusts, charitable gift annuities, donor advised funds, and endowment funds.

WELS Foundation now services 193 charitable remainder trusts, 589 charitable gift annuities, 16 donor advised funds and other similar related funds. It also processes gifts including real estate, life insurance, and marketable securities.

The net assets held by WELS Foundation are managed for the benefit of the WELS ministries as designated by the donor. These ministries include WELS Home and World Missions, WELS Ministerial Education, synodical schools, congregations, area Lutheran high schools, and numerous other WELS-affiliated ministries.

### **Northwestern Publishing House / [www.nph.net](http://www.nph.net)**

Northwestern Publishing House serves God's people by providing Christ-centered resources for the church, school, home, and for personal Bible study and growth in the Christian faith and life.

Northwestern Publishing House operates as an independent corporation working in close cooperation with WELS agencies. It receives no funds from the synod's operating budget, but relies solely on the sales of its products, services, and grants for its continued operation. Any revenues in excess of expenses go back into the development of more products and services.

The publishing house continues to develop new Christ-centered resources and services. It is currently working on a new religion curriculum for Lutheran elementary schools and Sunday schools.

# Our financial picture

---

Thanks to God's grace and the faithful stewardship of his people, operating support exceeded expenses by \$3.4 million for fiscal year 2007-08 (FY 2008). Total operating financial support for the year was \$38.3 million, about \$3.5 million more than budgeted and 18 percent more than the prior fiscal year. Operating expenses were \$34.9 million, about \$100,000 more than budgeted. The \$3.4 million surplus will be used to partially fund the anticipated deficit for fiscal year 2009.

But the operating budget represents only a fraction of the synod's ministry. For instance, the operating budget includes World Missions, but it does not include direct gifts to specific world missions or other ministries. Likewise, it only includes the operation subsidy for the synod's four ministerial education schools, not the full cost of ministerial education. It also does not reflect the operations of the synod's subsidiaries—Northwestern Publishing House, WELS Church Extension Fund, WELS Foundation, and WELS Investment Funds.

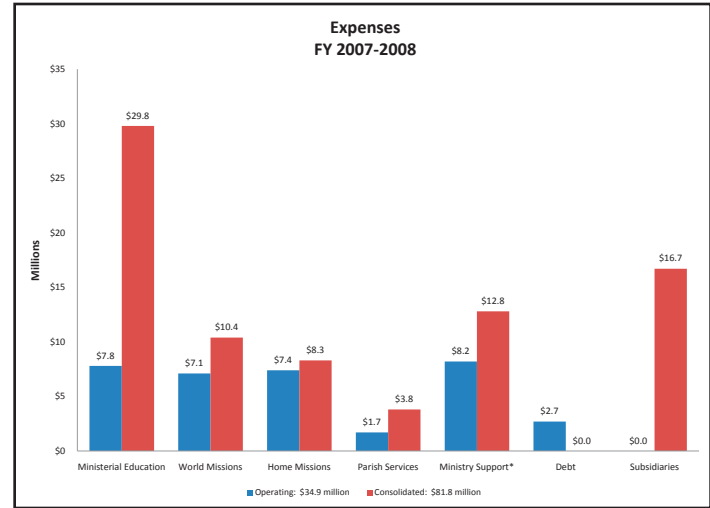
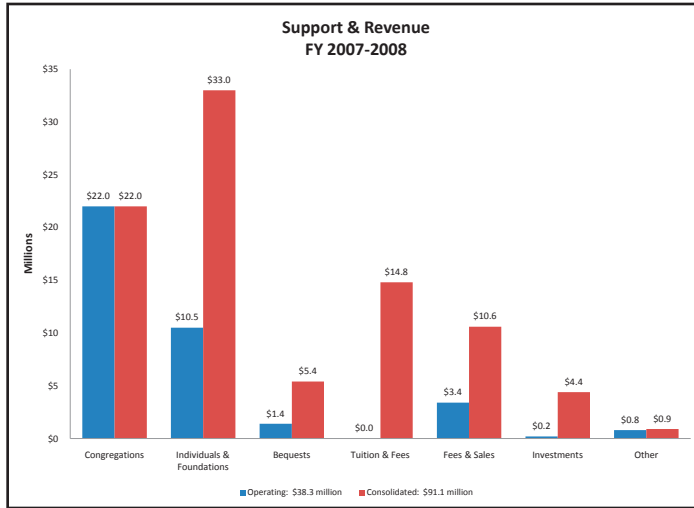
Consolidated, the synod's ministry cost \$81.8 million for the year—\$46.9 million above and beyond the operating budget. The above and beyond amount includes, among other costs, \$22.0 million not reflected in the operating budget to run the four ministerial education schools, plus an additional \$4.2 million for missions at home and abroad.

Consolidated, the synod had support and revenue of \$91.1 million for the year or about \$63.8 million above and beyond the operating budget. This above and beyond amount includes student tuition and fees of \$14.8 million; retail sales of \$10.6 million (largely from Northwestern Publishing House and Parish Services); \$26.5 million in gifts from individuals, foundations, and bequests; and \$4.2 million of investment income.

All told, the synod's net assets increased in fiscal year 2008 by \$9.3 million. About \$4 million of the increase was from gifts to the endowments for ministerial education and missions or from donors for direct gifts to specific ministries for use in the future. The remaining balance represents amounts designated for future ministry programs and services.

*For more information, visit [www.wels.net/jump/finance](http://www.wels.net/jump/finance)*

# Our financial picture *(continued)*



\* Ministry Support includes synod convention, Conference of Presidents, Synodical Council, district and congregational ministries, synod praesidium, support and special support, Ministry of Christian Giving, Technology, Communications, Financial Services, Human Resources, and synod facilities.

## **WELS Mission Statement**

As men, women, and children united in faith and worship by the Word of God, the Wisconsin Evangelical Lutheran Synod exists to make disciples throughout the world for time and for eternity, using the gospel in Word and sacrament to win the lost for Christ and to nurture believers for lives of Christian service, all to the glory of God.



Wisconsin Evangelical Lutheran Synod  
2929 North Mayfair Road  
Milwaukee, WI 53222  
414-256-3888 • [www.wels.net](http://www.wels.net)